

**From:**

Paul Pruet <compgeeks@cocoavillagepublishing.com>

**To whom it may concern**

**DATE:** March 18, 2010

**SUBJECT:**

W443D-PB -- 300Mbps 802.11n MIMO Wireless LAN/Firewall  
DHCP server for router fails to offer appropriate DNS to clients

I have been in correspondence with ComputerGeeks.com about this router and my concerns that other users may have similar performance issues due to inappropriate DNS offered by it's DHCP server.

The issue is not DDNS, but that the router appears to only offer to turn on or turn off DNS and it does not use offer itself nor the DNS it acquired from it's WAN connection. Instead the DHCP server on the router offers a DNS to clients in CHINA, 168.95.1.1

The other issue, because it is generic, I don't know where to get firmware upgrades nor how to get manufacturing support other than from where I bought it, ComptuerGeeks.com

Because it is a reasonable price I am not asking for an RMA, but I am asking that the issue be resolved or that other customers buying the product how and where to upgrade firmware to

resolve, or to be warned that it cannot be fixed and to manually set their DNS on personal computers using the router.

-----

Here is the relevant information and screen shots:

I verified this on two XP computers using wireless and a Vista computer that connected by wire. Below I took screen shots after resetting the wireless router and connecting with a VISA computer with a wired connection.

Here is a screen show showing that I did use the cmd.exe window as administrator and cleared my IP configuration, ipconfig /release then ipconfig /renew to pick up the router with its manufacturing settings:

```
Administrator: cmd.exe
C:\Windows\system32>
C:\Windows\system32>
C:\Windows\system32>
C:\Windows\system32>
C:\Windows\system32>ipconfig /renew

Windows IP Configuration

Ethernet adapter Local Area Connection:

    Connection-specific DNS Suffix  . : 
    Link-local IPv6 Address . . . . . : fe80::54d3:6222:b57c:9aab%8
    IPv4 Address. . . . . : 192.168.1.150
    Subnet Mask . . . . . : 255.255.255.0
    Default Gateway . . . . . : 192.168.1.1

Tunnel adapter Local Area Connection* 6:

    Media State . . . . . : Media disconnected
    Connection-specific DNS Suffix  . : 

Tunnel adapter Local Area Connection* 7:

    Connection-specific DNS Suffix  . : 
    IPv6 Address. . . . . : 2001:0:4137:9e76:20f7:177b:3f57:fe69
    Link-local IPv6 Address . . . . . : fe80::20f7:177b:3f57:fe69%9
    Default Gateway . . . . . : ::

C:\Windows\system32>
```

This next two screen shots show that I used a Microsoft Internet Explorer web browser to login to the router. Also note the Firmware version is “Router 1.9 (Feb 13 2009)”

Connect to 192.168.1.1

The server 192.168.1.1 at Wireless 802.11n router requires a username and password.

Warning: This server is requesting that your username and password be sent in an insecure manner (basic authentication without a secure connection).

User name:

Password:

Remember my password

OK Cancel

802.11n Wireless Router - Windows Internet Explorer

http://192.168.1.1/home.asp

# 802.11n Draft 2.0 Broadband Router

Best Wireless and Networking Solution

open all close all

- [INFORMATION]
- Operation Mode
- Network Settings
- Wireless Settings
- Firewall Settings
- Services Settings
- Management
- Information
- Logout

### ETHERNET PORT STATUS

LAN4	LAN3	LAN2	LAN1	WAN

### SYSTEM INFORMATION

**System Name :** 802.11n Wireless Router  
**Firmware Version :** Router 1.9 (Feb 13 2009)  
**System Uptime :** 6 mins, 2 secs  
**Operation Mode :** Gateway Mode

### WAN INTERFACE INFORMATION

**MAC Address :** 00:08:54:99:22:81  
**IP Assign Type :** DHCP  
**IP Address :** 65.33.93.163  
**Subnet Mask :** 255.255.248.0  
**Default Gateway :** 65.33.88.1  
**Primary DNS :** cfl.rr.com  
**Secondary DNS :** 65.32.5.111

Next screen show shows LAN settings. Note that you can enable or disable DHCP, set the range but not what DNS is offered.

The screenshot displays the web interface of an 802.11n Draft 2.0 Broadband Router. The browser window shows the URL `http://192.168.1.1/home.asp`. The page title is "802.11n Draft 2.0 Broadband Router" with the subtitle "Best Wireless and Networking Solution".

The interface includes a navigation menu on the left with the following items: [INFORMATION], Operation Mode, Network Settings (WAN Settings, LAN Settings, QoS Settings), Wireless Settings, Firewall Settings, Services Settings, Management, Information, and Logout. The "LAN Settings" option is selected.

At the top of the main content area, there are "Save Settings" and "Reset Settings" buttons. Below this is the "ROUTER SETTINGS" section, which contains the following fields:

- IP Address: 192.168.1.1
- Subnet Mask: 255.255.255.0
- UPnP: Disable

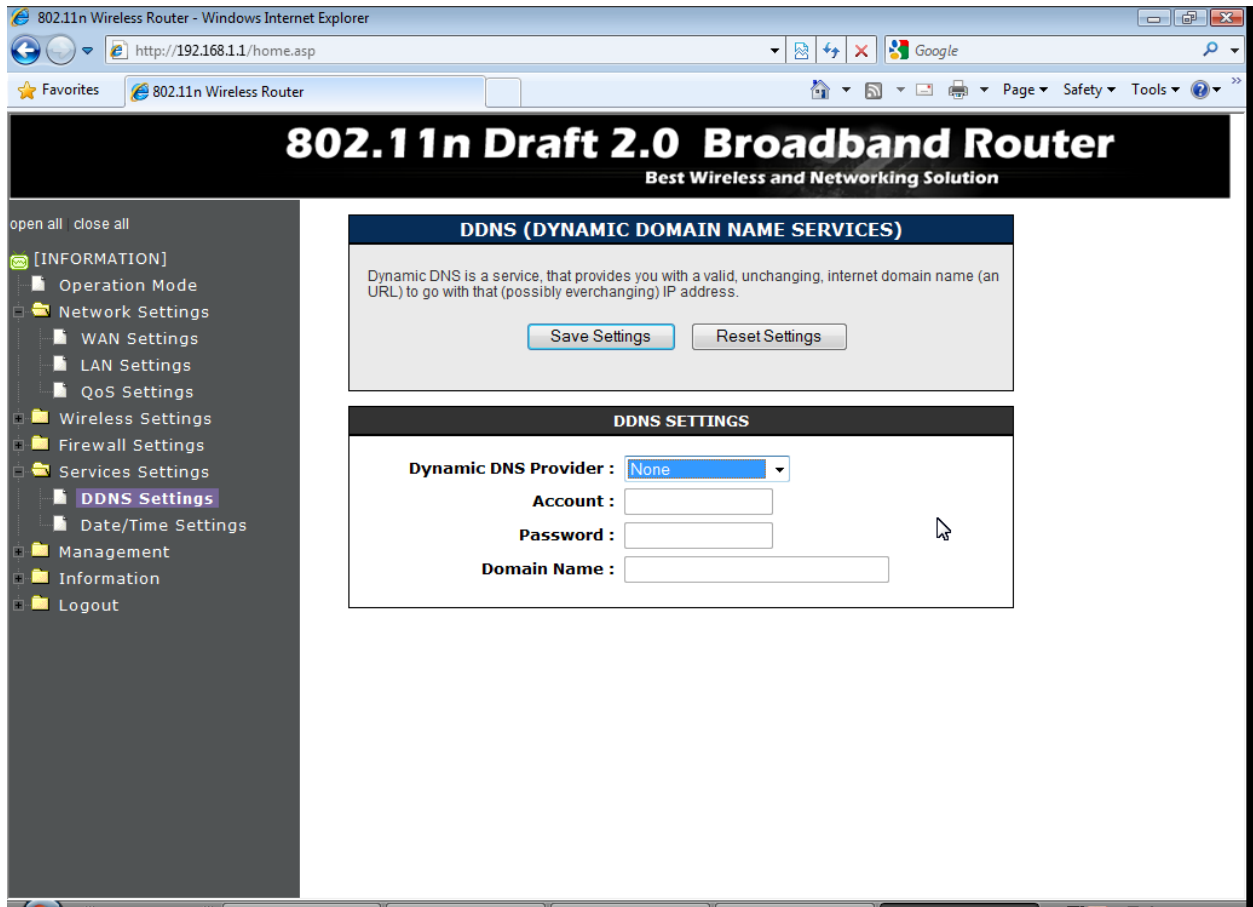
The "DHCP SERVER SETTINGS" section includes the following fields:

- DHCP Type: Enable
- DHCP IP Range: 192.168.1.150 to 192.168.1.200
- DHCP Lease Time: 86400 seconds (60.86400)

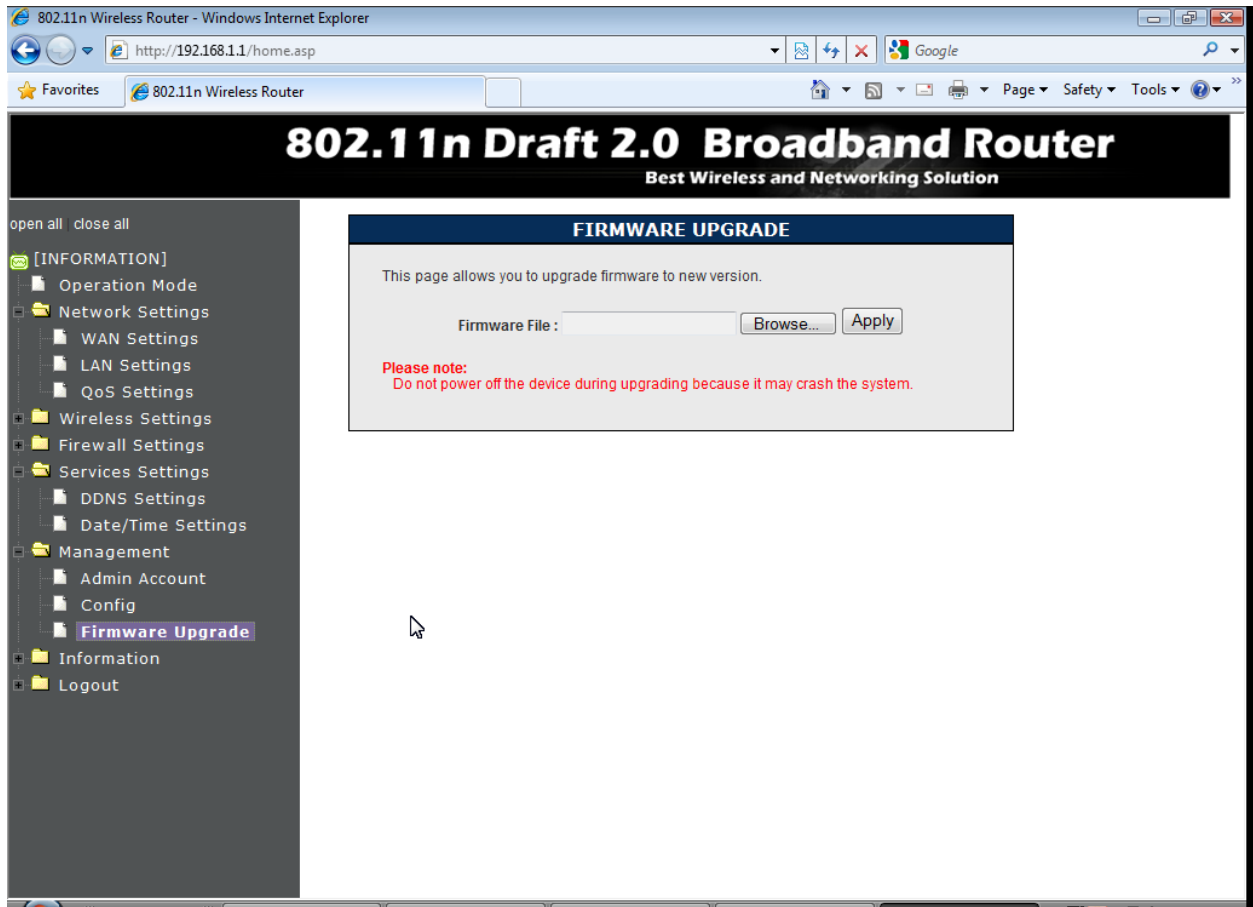
At the bottom, there is a "DHCP CLIENTS LIST" table with the following data:

IP Address	MAC Address	Expires in (seconds)
192.168.1.150	00:1F:D0:9F:BA:8A	86013

Next screen show shows I do not have a DDNS setup nor do I need one, and the default manufacturer does not set one, nor should the average person need one unless their WAN IP changes frequently and they need to know it remotely.



Next screen show shows the firmware page to illustrate that we don't know where to get the firmware from.



Next two screens show the system information, and note that it has regional DNS settings on the WAN connection supplied by central florida road runner, 65.33.88.1 and 64.32.5.111. Later we will note the DHCP server does not offer these nor the gateway IP.

802.11n Wireless Router - Windows Internet Explorer  
http://192.168.1.1/home.asp

# 802.11n Draft 2.0 Broadband Router

Best Wireless and Networking Solution

open all close all

- [INFORMATION]
- Operation Mode
- Network Settings
  - WAN Settings
  - LAN Settings
  - QoS Settings
- Wireless Settings
- Firewall Settings
- Services Settings
  - DDNS Settings
  - Date/Time Settings
- Management
  - Admin Account
  - Config
  - Firmware Upgrade
- Information
  - System Information**
  - Packet Statistics
  - System Log
- Logout

### ETHERNET PORT STATUS

LAN4	LAN3	LAN2	LAN1	WAN

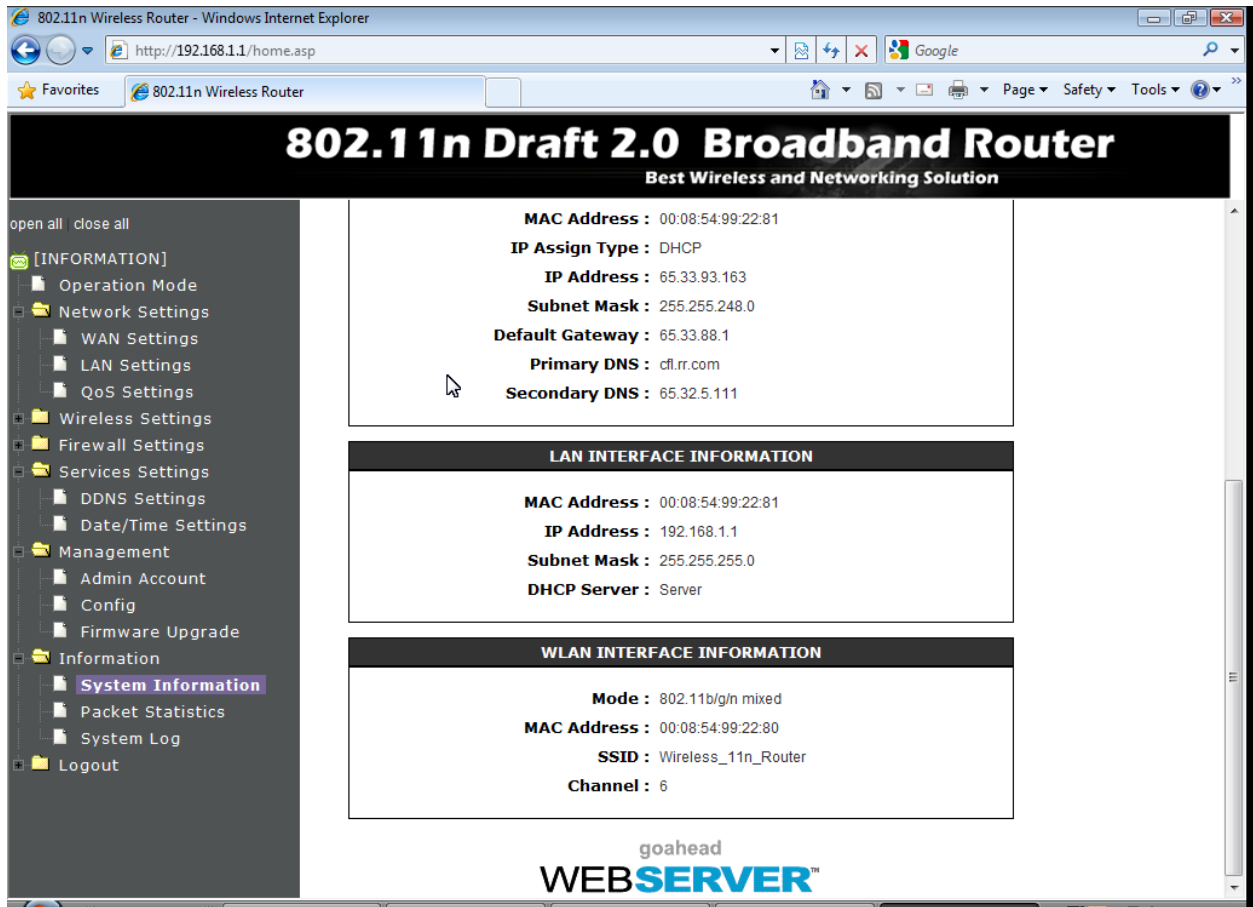
### SYSTEM INFORMATION

**System Name :** 802.11n Wireless Router  
**Firmware Version :** Router 1.9 (Feb 13 2009)  
**System Uptime :** 10 mins, 40 secs  
**Operation Mode :** Gateway Mode

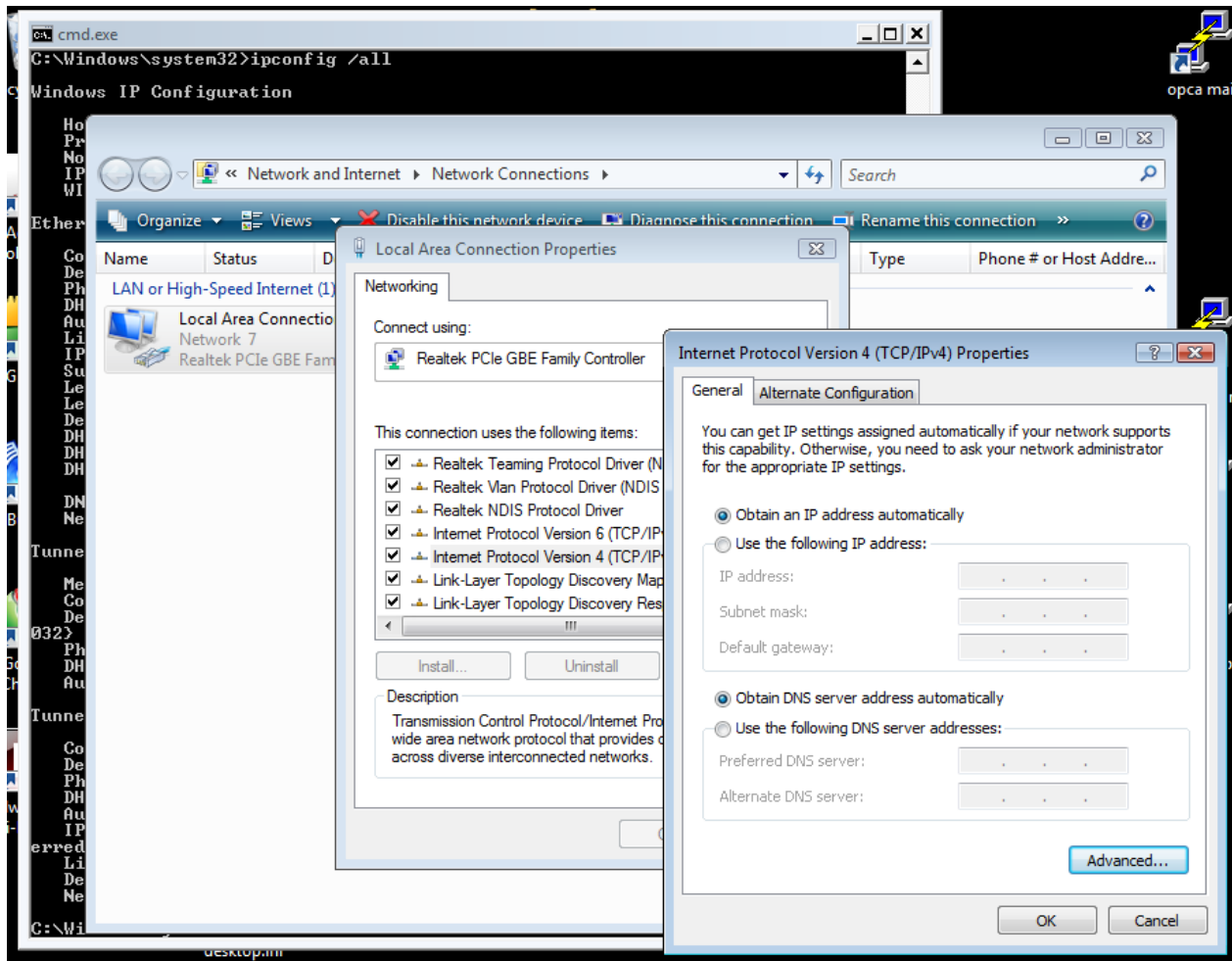
### WAN INTERFACE INFORMATION

**MAC Address :** 00:08:54:99:22:81  
**IP Assign Type :** DHCP  
**IP Address :** 65.33.93.163  
**Subnet Mask :** 255.255.248.0  
**Default Gateway :** 65.33.88.1  
**Primary DNS :** cfl.rr.com  
**Secondary DNS :** 65.32.5.111





Next screen shows that I do not have any IP nor DNS preset in my network settings on my personal computer. I will preset something afterwards so I am not using a DNS in china.



AND folks here is the proof, when I do a ipconfig /all and look at the DNS given by your DHCP server on the router, it is 168.95.1.1 which is not a regional DNS causing delays and poor user experience when using this product:

```
Administrator: cmd.exe
C:\Windows\system32>
C:\Windows\system32>ipconfig /all

Windows IP Configuration

Host Name . . . . . : sysadmin-PC
Primary Dns Suffix . . . . . :
Node Type . . . . . : Hybrid
IP Routing Enabled. . . . . : No
WINS Proxy Enabled. . . . . : No

Ethernet adapter Local Area Connection:

Connection-specific DNS Suffix . . . . . :
Description . . . . . : Realtek PCIe GBE Family Controller
Physical Address. . . . . : 00-1F-D0-9F-BA-8A
DHCP Enabled. . . . . : Yes
Autoconfiguration Enabled . . . . . : Yes
Link-local IPv6 Address . . . . . : fe80::54d3:6222:b57c:9aab%8(Preferred)
IPv4 Address. . . . . : 192.168.1.150(Preferred)
Subnet Mask . . . . . : 255.255.255.0
Lease Obtained. . . . . : Thursday, March 18, 2010 1:48:02 AM
Lease Expires . . . . . : Friday, March 19, 2010 1:48:02 AM
Default Gateway . . . . . : 192.168.1.1
DHCP Server . . . . . : 192.168.1.1
DHCPv6 IAID . . . . . : 134225872
DHCPv6 Client DUID. . . . . : 00-01-00-01-12-90-A3-17-00-1F-D0-9F-BA-8A

DNS Servers . . . . . : 168.95.1.1
NetBIOS over Tcpip. . . . . : Enabled

Tunnel adapter Local Area Connection* 6:

Media State . . . . . : Media disconnected
Connection-specific DNS Suffix . . . . . :
Description . . . . . : isatap.{9EAE66E0-90D4-47A9-9FDD-3C40B1313032}
Physical Address. . . . . : 00-00-00-00-00-00-E0
DHCP Enabled. . . . . : No
Autoconfiguration Enabled . . . . . : Yes

Tunnel adapter Local Area Connection* 7:

Connection-specific DNS Suffix . . . . . :
Description . . . . . : Teredo Tunneling Pseudo-Interface
Physical Address. . . . . : 02-00-54-55-4E-01
DHCP Enabled. . . . . : No
Autoconfiguration Enabled . . . . . : Yes
IPv6 Address. . . . . : 2001:0:cf2e:3096:1014:169e:3f57:fe69(Preferred)
Link-local IPv6 Address . . . . . : fe80::1014:169e:3f57:fe69%9(Preferred)
Default Gateway . . . . . : ::
NetBIOS over Tcpip. . . . . : Disabled

C:\Windows\system32>
```